

Sure Partners Limited

ARKLOW BANK WIND PARK  
PHASE 2

**ONSHORE GRID  
INFRASTRUCTURE**

**VOLUME III**

**Chapter 9 APPENDICES**

**Appendix 9.2** Site Walkover Summary

ARUP

 **sse**  
Renewables

## Appendix 9.2

Arklow Bank Cable Route

Arup Site Walkover

# Arklow Bank Cable Route Arup Site Walkover

June/July 2020

# Overview

Areas Accessed during Site Walkover:

All Areas





# Sheet 1

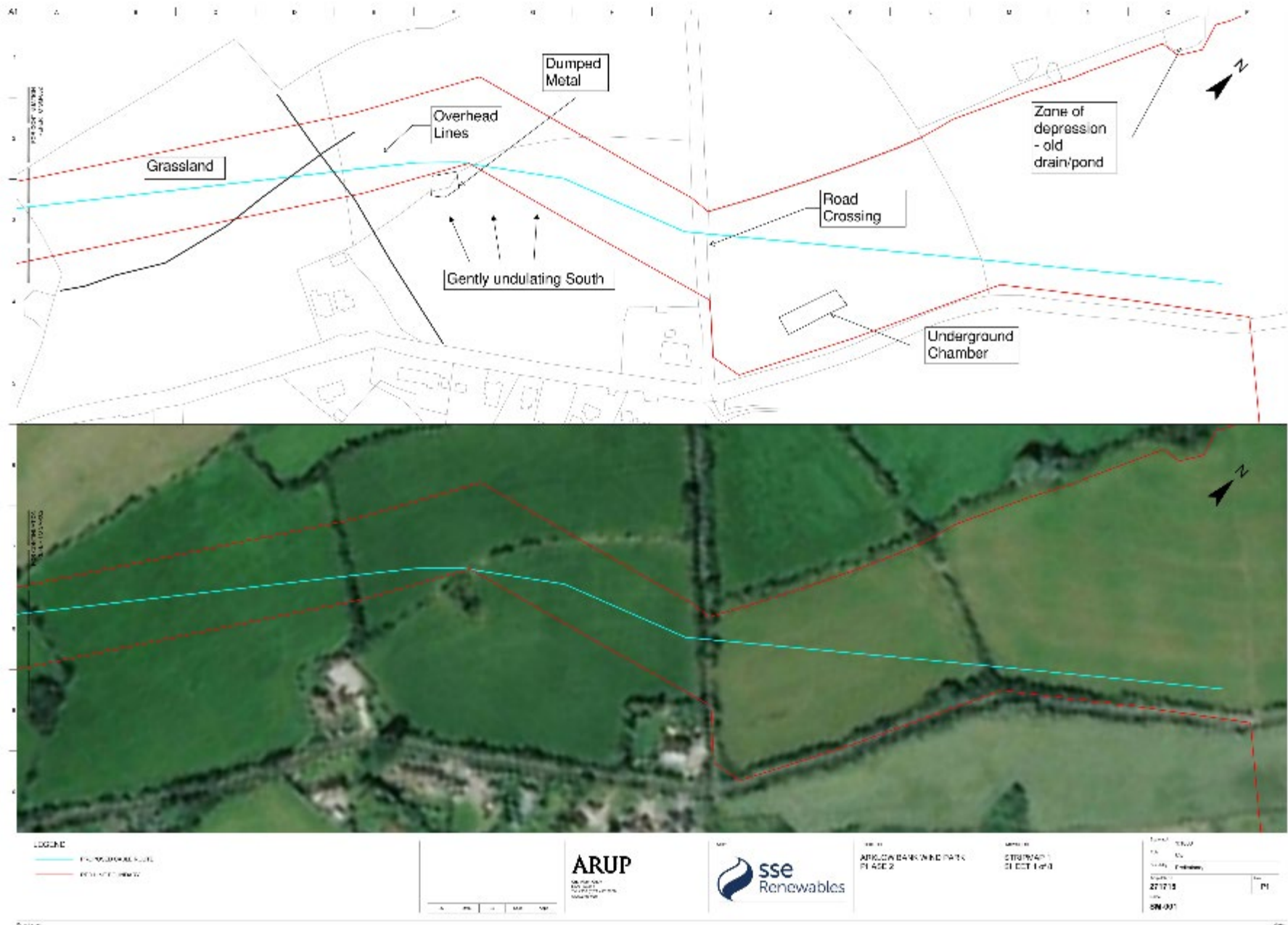
## Summary

Mainly agricultural fields;

Generally no soft spots, depressions or marsh areas identified;

Undulating topography with significant:

- 1 no. road crossing (L95115)
- 3 no. hedgerow/ditches/field boundaries
- 2 no OH Cable
- Possible services





# Sheet 1

Agricultural Land



Chamber Box



Road Crossing

Dumped Metal



Overhead Lines



Undulating Topography





**Summary**

Mainly agricultural fields;

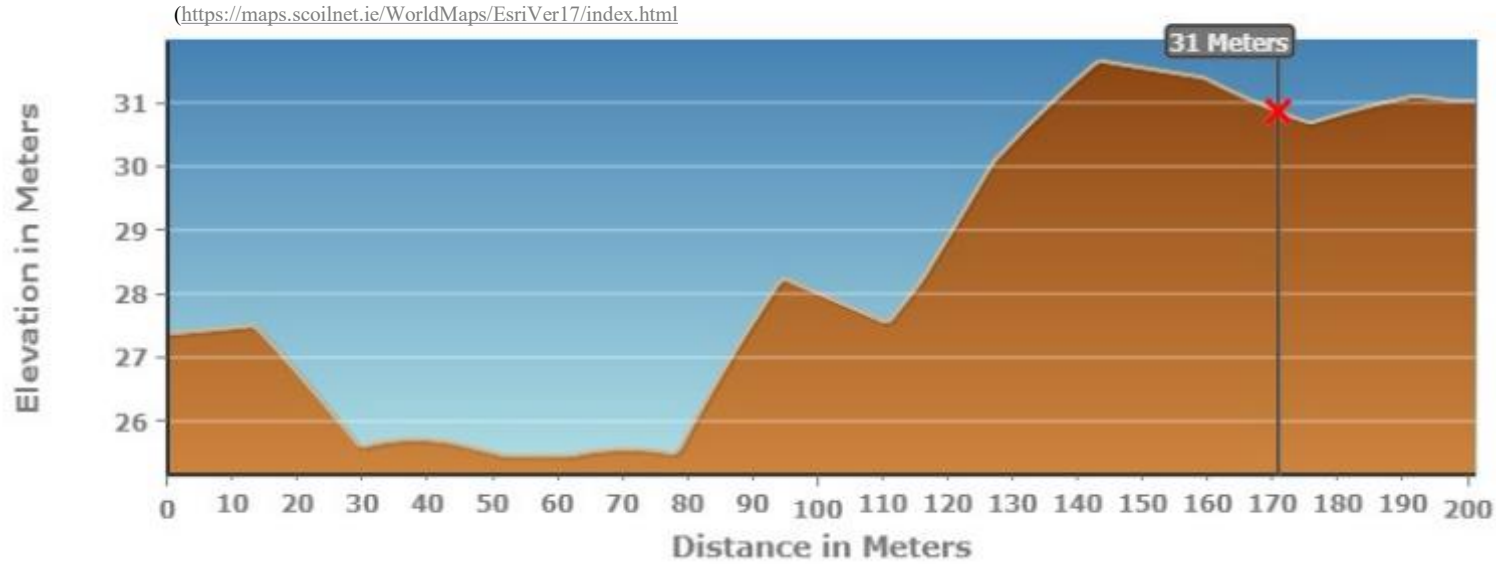
Generally no soft spots;  
depressions or marsh areas  
identified;

Undulating topography with  
significant change in elevation  
east of stream crossing;

- 1 no. stream crossing
- 4 no. hedgerow/ditches/field boundaries



# Sheet 2



Steep Elevation Change –  
top view



Steep Elevation  
Change – bottom view



Stream





## Sheet 3

### Summary

Mainly agricultural fields;

Generally limited soft spots apart from areas around the drainage ditches – low lying soggy wet ground which has been artificially drained;

Undulating topography.

- 5 no. hedgerow/ditches/field boundaries
- 2 to 3 no. Drainage ditch



# Sheet 3

Agricultural land



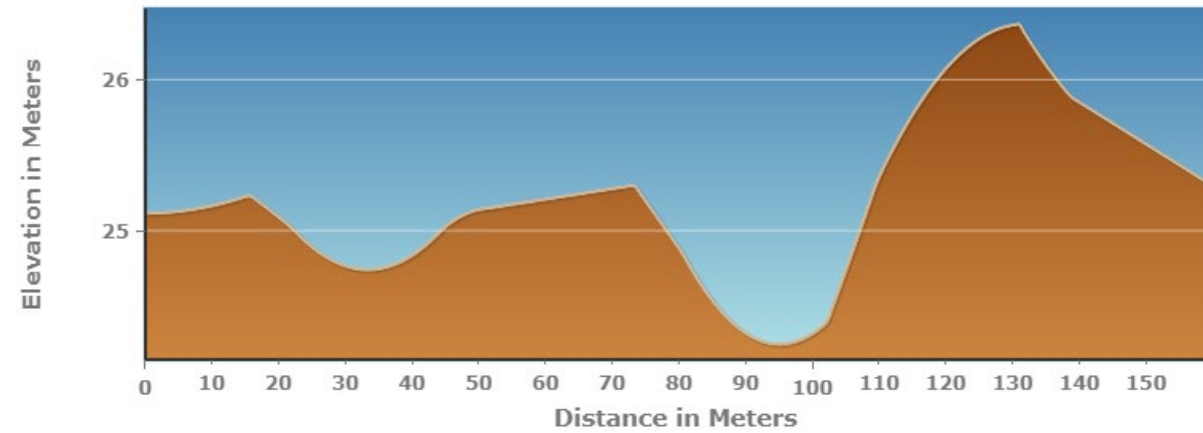
Drainage Ditch



Agricultural land



Elevation Profile



(<https://maps.scoilnet.ie/WorldMaps/EsriVer17/index.html>)



## Sheet 4

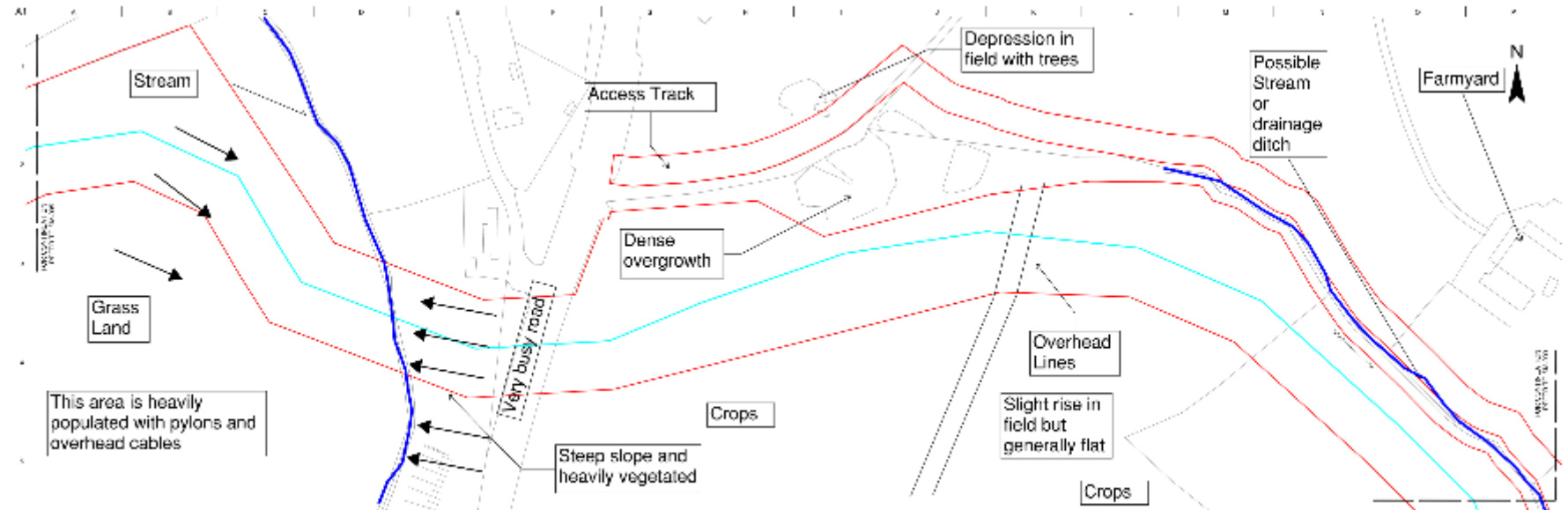
### Summary

Mainly agricultural fields;

Generally no soft spots;

Undulating topography.

- 1 no. road crossing
- 2 no. stream crossing
- 1 no. possible seasonal pond (Ch.2550)
- 3 no. hedgerow/ditches/field boundaries
- 1 no. OH cables
- Possible services



# Sheet 4

Agricultural Land



Overhead powerlines



Dense Vegetation



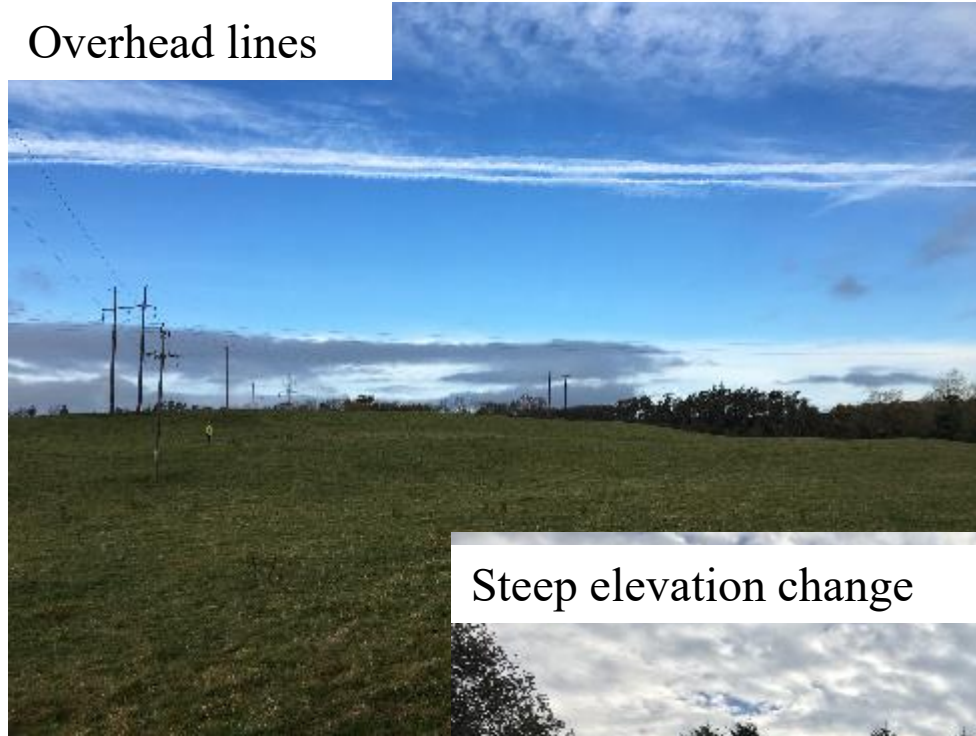


# Sheet 4

Access Road



Overhead lines



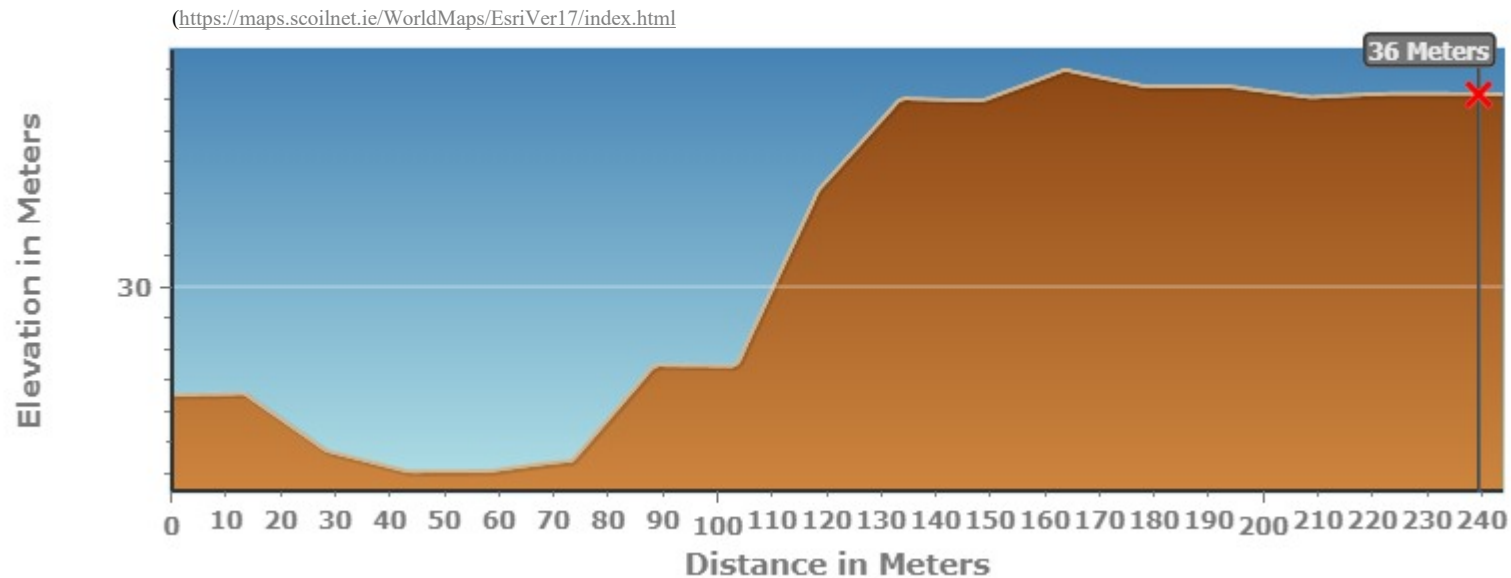
Stream



Steep elevation change







Elevation change & Dense Vegetation



# Overview

Areas Accessed during Site Walkover:

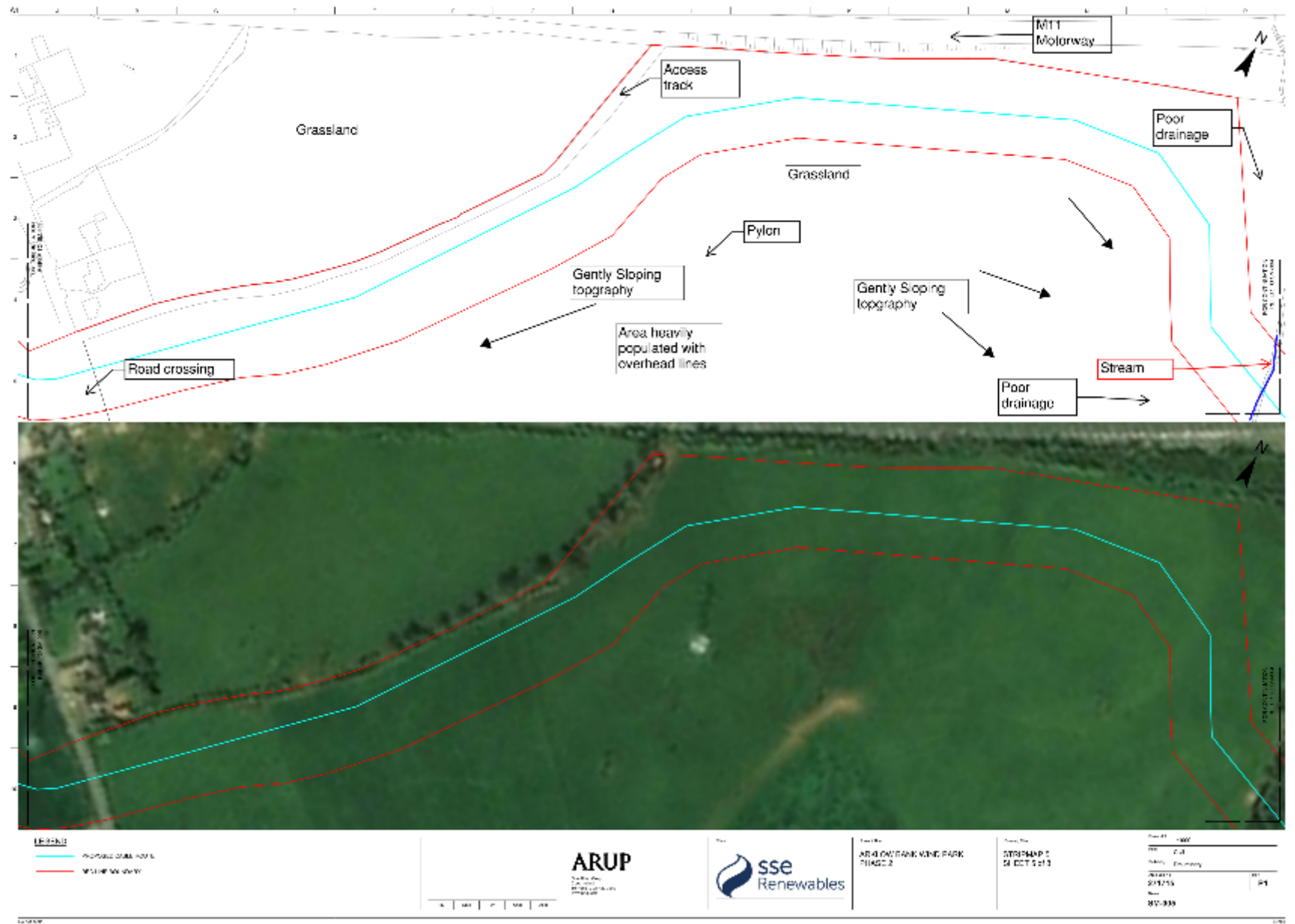
## Sheet 5

Mainly agricultural fields;

Poor drainage noted around stream crossing

## Undulating topography.

Heavily populated with  
overhead lines



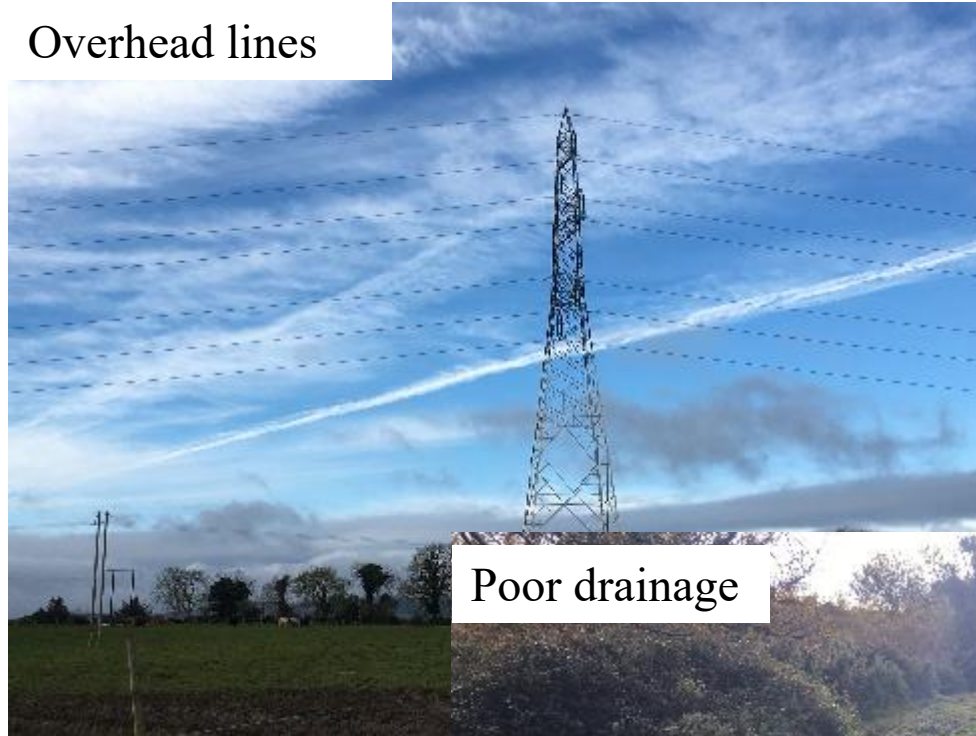


# Sheet 5

Access Track



Overhead lines



Topography



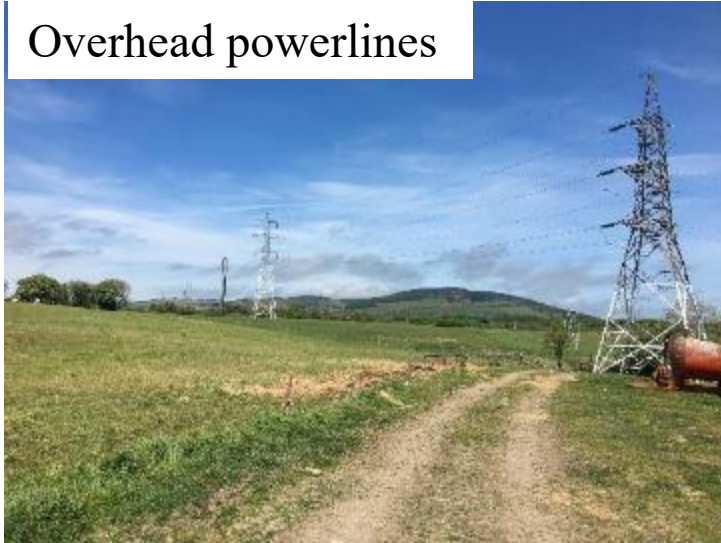
Poor drainage





# Sheet 5

Overhead powerlines



Sloping topography



## Sheet 6

### Summary

Mainly agricultural fields;

Generally no soft spots;

Undulating topography.

- 5 no. hedgerow/ditches/field boundaries
- 2 No. overhead lines
- Possible services
- 1 No. Road crossing,
- 1 No. motorway crossing
- 1 No. Stream crossing





# Sheet 6

Road Crossing



Drainage ditch



Agricultural Land with gently sloping topography



## Sheet 7

### Summary

Agricultural fields and road routing

Generally no soft spots;

Undulating topography.

- 1 no. stream crossing
- 1 no. road crossing 4 no. hedgerow/ditches/field boundaries
- 1 no. overhead cables





# Sheet 7

Private Road



Overview of land below



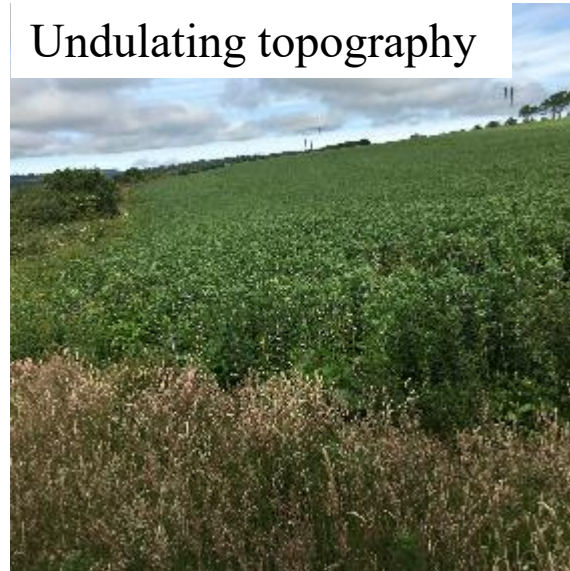
Seasonal pond



Agricultural Land



Undulating topography



Mound with dumped material



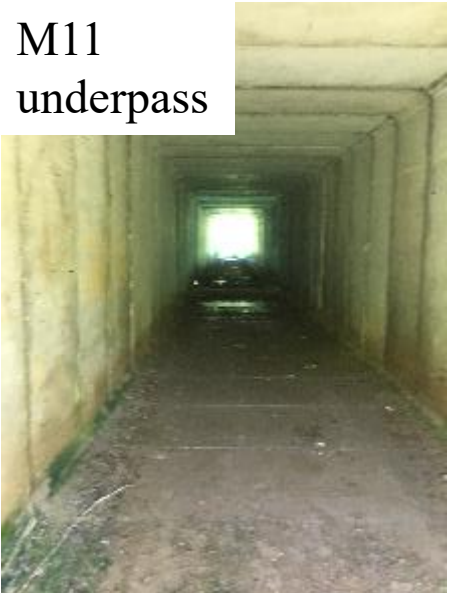


# Sheet 7

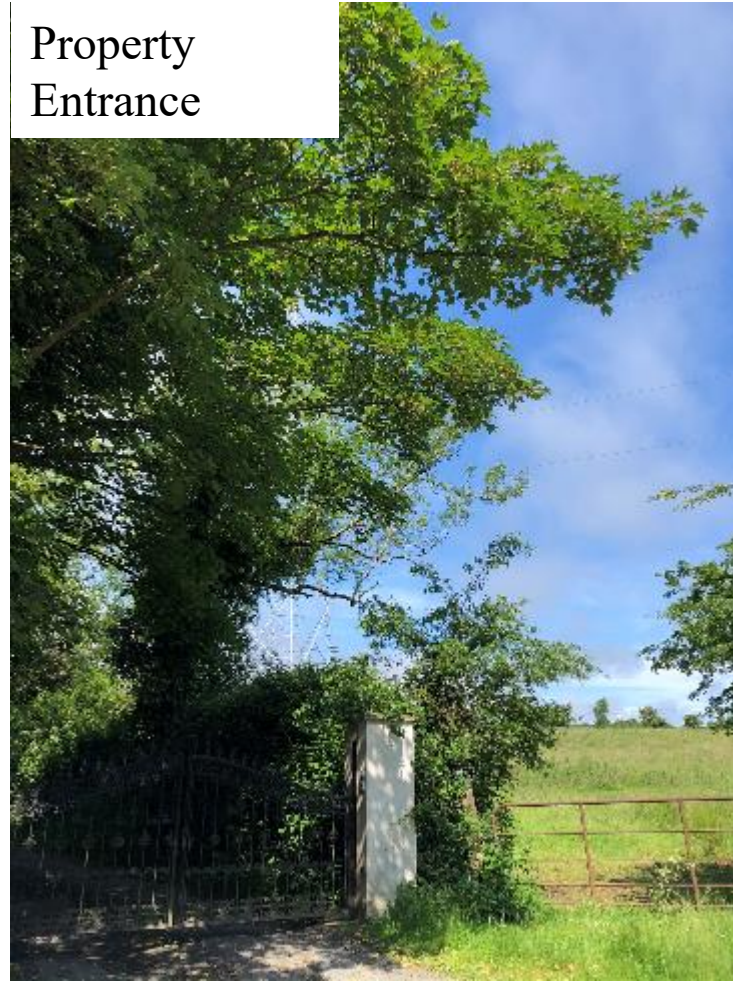
Private Road



M11  
underpass



Property  
Entrance



Agricultural field



Sloping topography





# Sheet 8 – Proposed Substation

- Former industrial site
- Steep elevation change and dense vegetation 1 no. overhead cables
- 1 borrow pit and outcropping bedrock
- 1 no. stream drain at compound site entrance
- Possible services





# Sheet 8 – Proposed Substation

Storage Yard



Stream/Drain



Outcropping rock



Compound Site



Dense Vegetation

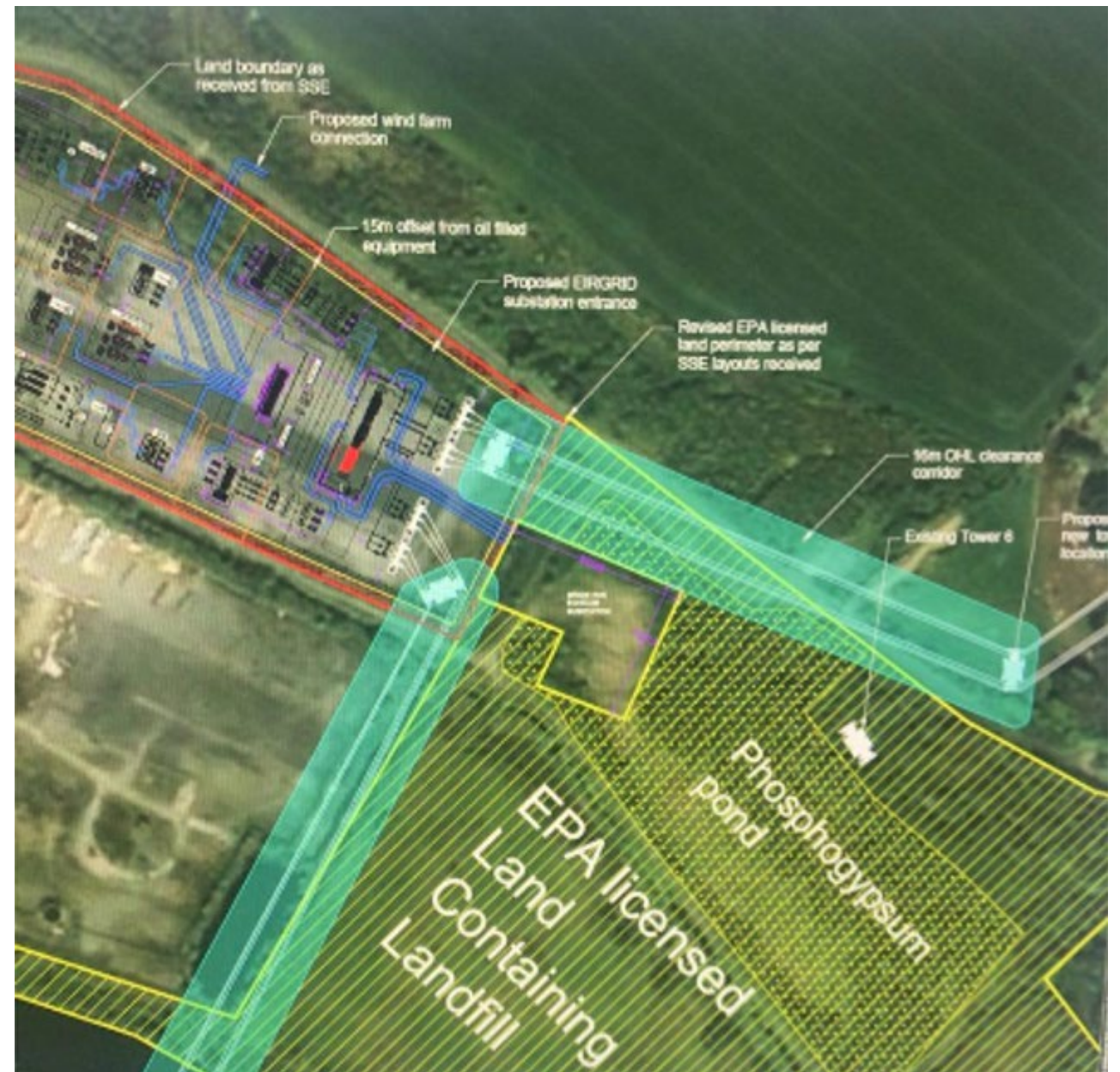




## Sheet 8 – Proposed Pylon Movement

### Summary

- Elevation Changes
- Dense overgrowth
- Artificial mounds





# Sheet 8 – Pylon Realignment

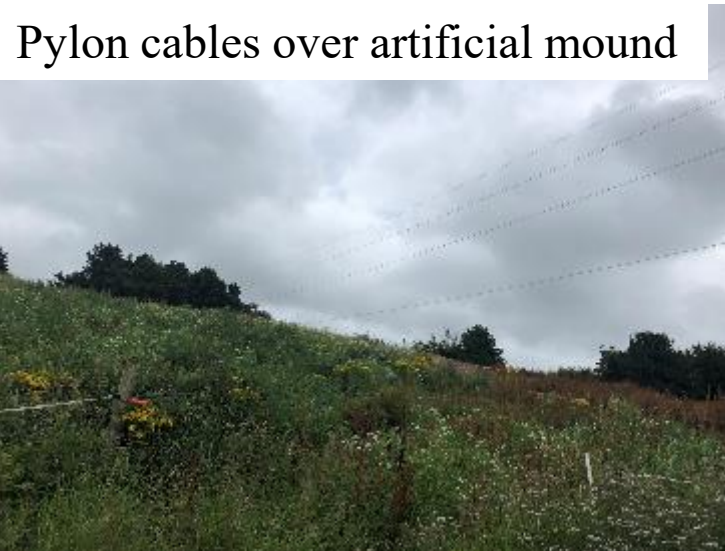
Pylon adjacent road



Lay down area



Pylon cables over artificial mound



Elevation Change



Pylon in dense overgrowth

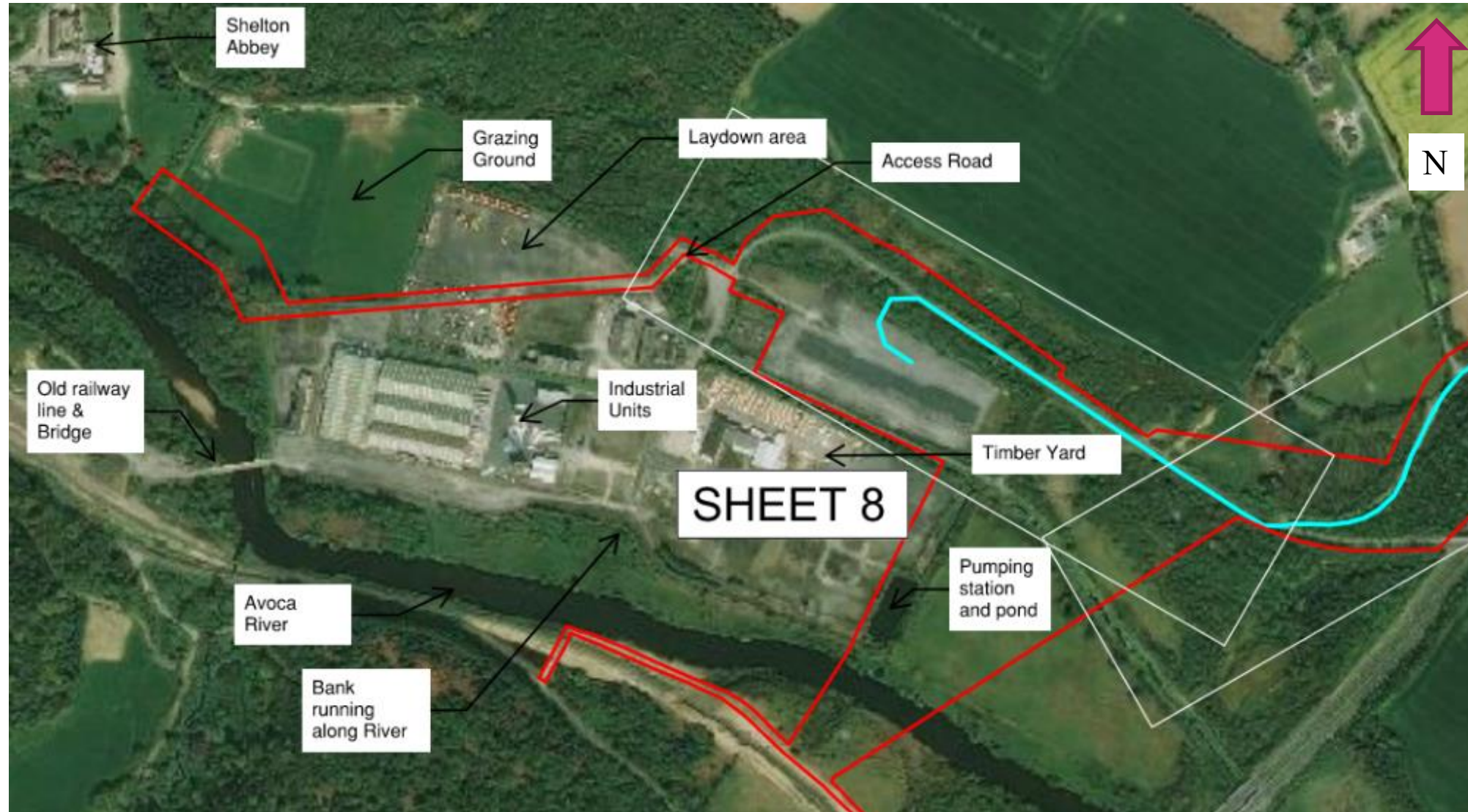




# Overview

Areas Accessed during  
Site Walkover:

Avoca River Park



Not to scale



# Avoca River Park

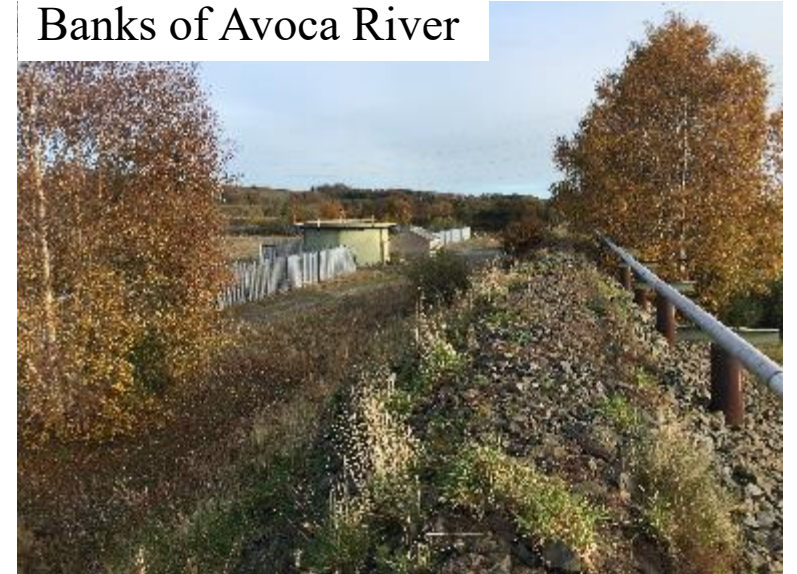
Access Road



Banks of Avoca River



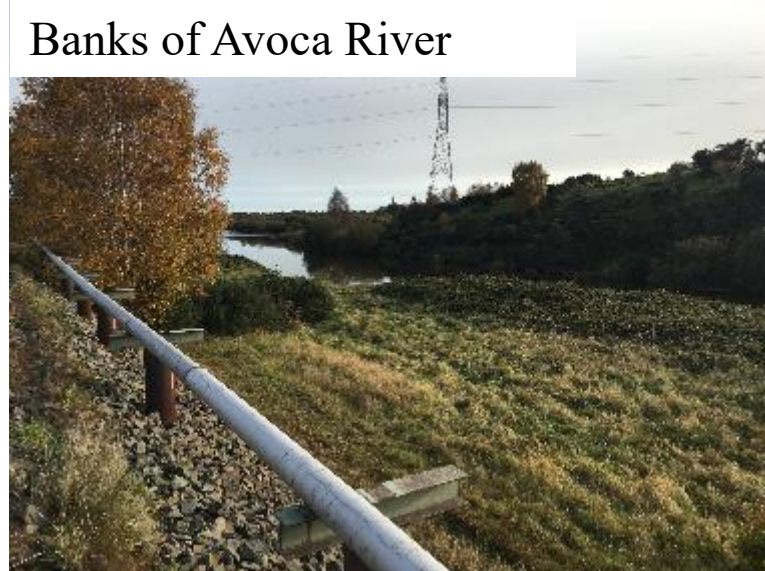
Banks of Avoca River



Laydown Area



Banks of Avoca River



Timber Yard





# Avoca River Park

Pumping Station



Old Railway line & Bridge



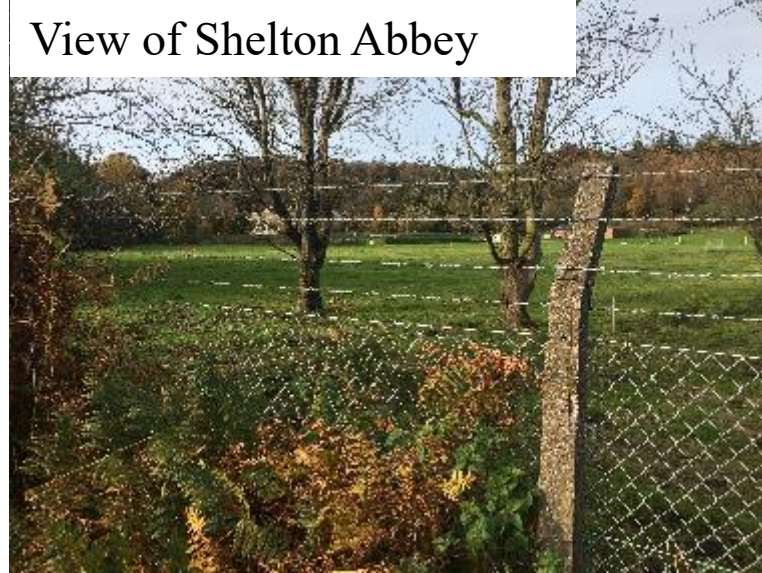
Grazing Ground



Pond



View of Shelton Abbey



Grazing Ground and laydown area

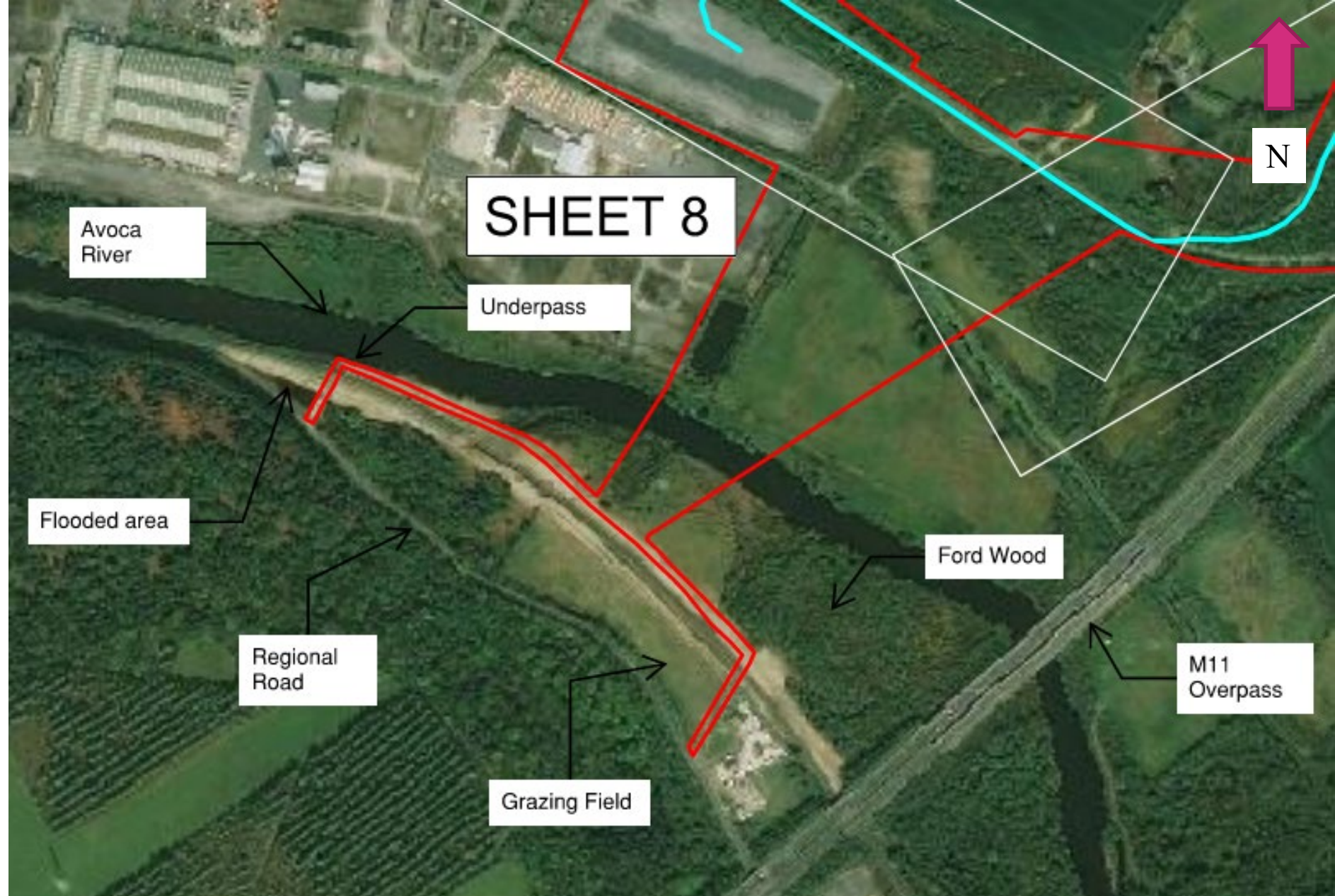




# Overview

Areas Accessed during Site Walkover:

South of Avoca River



Not to scale

ARUP



# South of the Avoca River

Flood Plain



View of Avoca River Park



View of Avoca River Park





# South of the Avoca River

Flood Area



Grazing Field



Ford Wood



Regional Road

